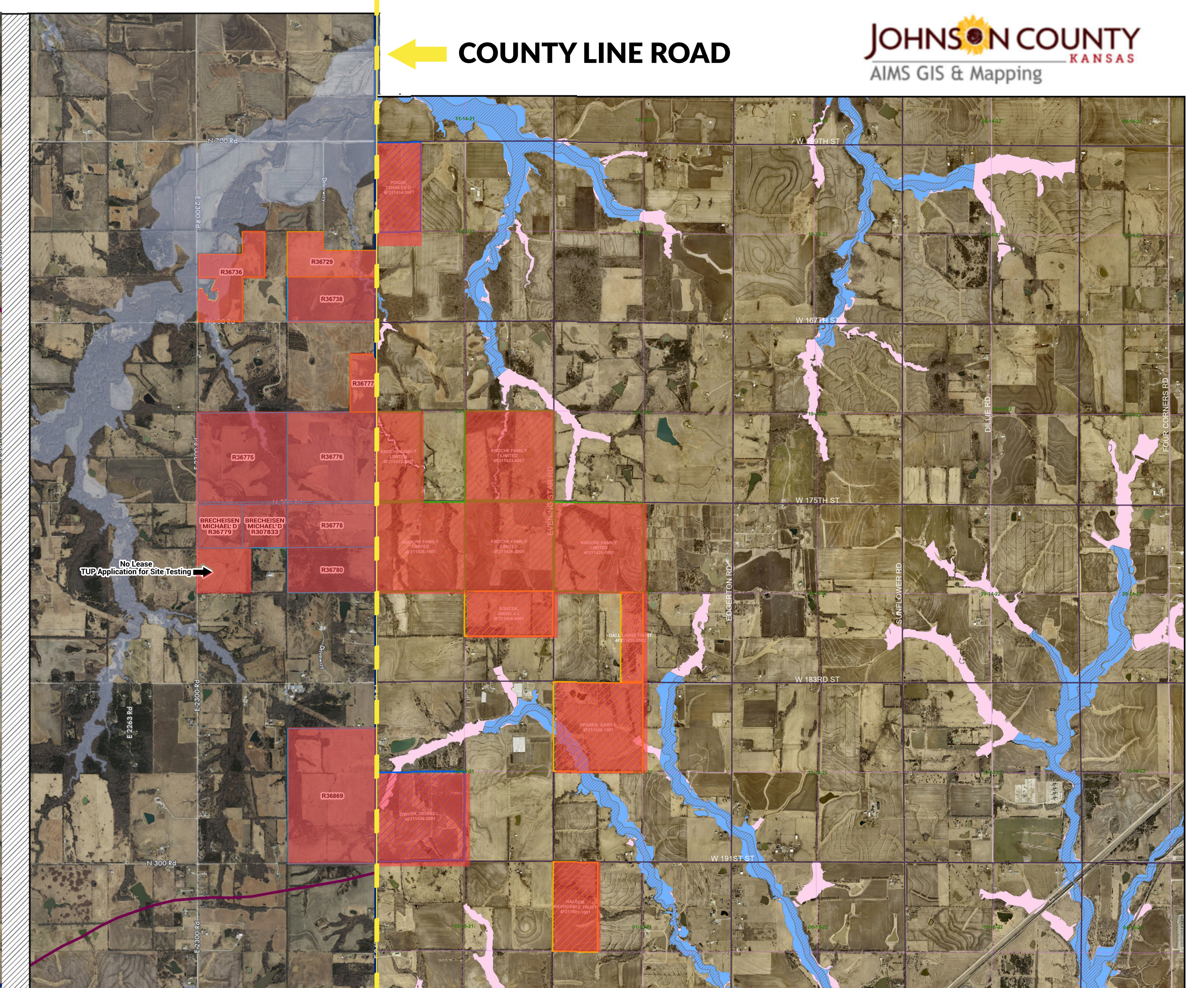
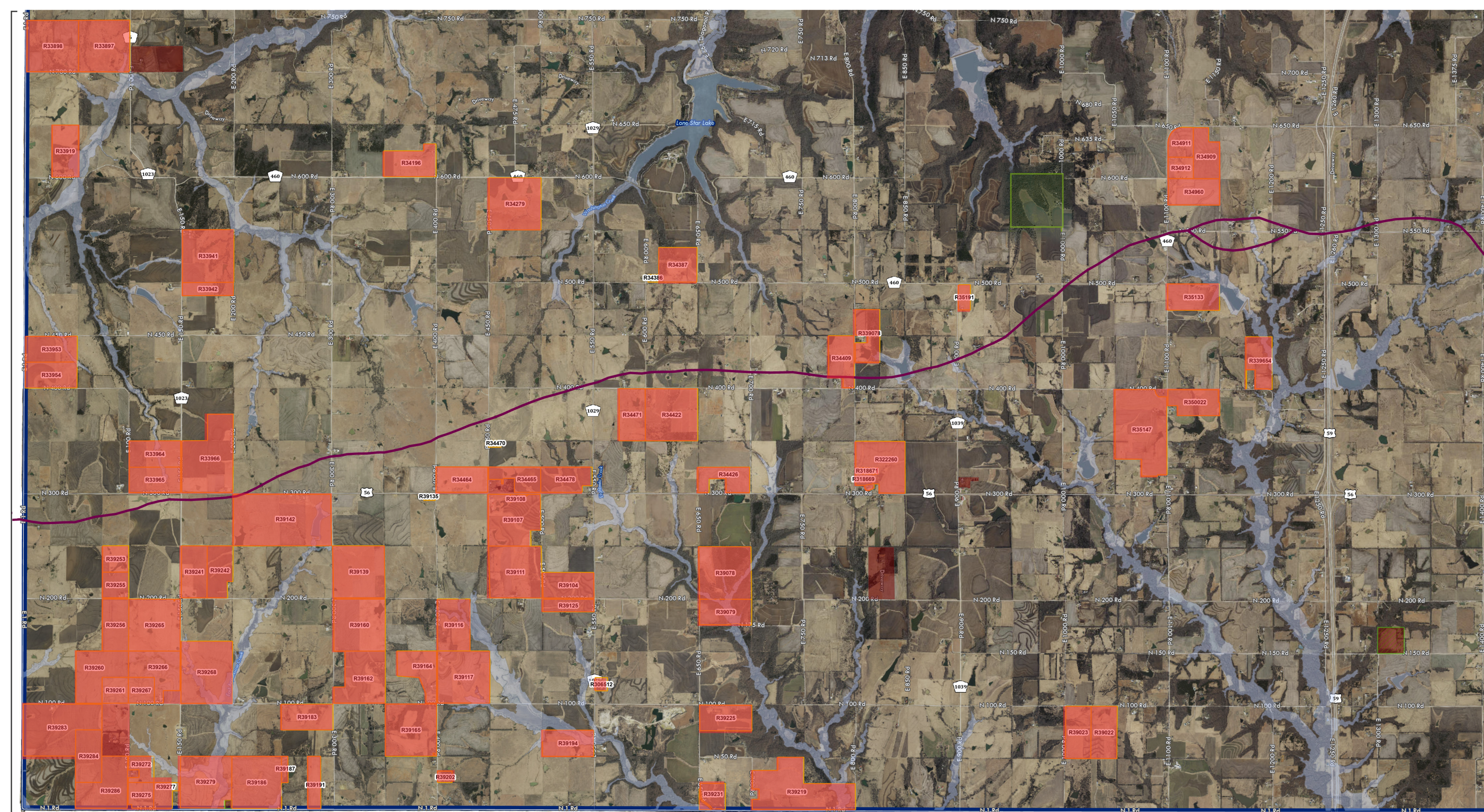


← **COUNTY LINE ROAD**



Map Frame:
West of Baldwin City, Kansas

SOUTH SECTION OF DOUGLAS COUNTY, KS: Flood Plains, Santa Fe Trail, National Register of Historic Places Map
TOTAL OF Approximately 8,463 Acres (13.22344 Square Miles) of Ground Leases Secured by NextEra Energy for Industrial Utility-Scale Solar/Wind Power Facilities
(Ground Leases/Deeds as of 4/3/2023, Sources: Douglas County, KS Deeds & GIS Mapping Departments)

Map Frame:
East of Baldwin City, Kansas

SOUTHWEST SECTION OF JOHNSON COUNTY, KS: Flood Plains Map
TOTAL OF Approximately 1,308.26 Acres (2.04415 Square Miles) of Ground Leases Secured by NextEra Energy for Industrial Utility-Scale Solar Power Facility

- NextEra Energy (Boulevard Associates, LLC & West Gardner Solar, LLC) Ground Leases/Deeds for Industrial Utility-Scale Solar/Wind Power Facilities
- 100 year floodplain
- Santa Fe Trail (NPS 2017)
- National Register of Historic Places
- Register of Historic Kansas Places



GIS MAP DISCLAIMER: This map is to be used for reference purposes only, and no other use or reliance on the same is authorized. Parcel lines are shown for tax purposes only and are not intended for conveyances, nor is it intended to substitute for a legal survey or property abstract. Parcels shown do not necessarily constitute a legal lot of record.
Map produced 4/17/2023, GIS, SS, CM
Date of Imagery: March 2022 by Surdex Corporation

- PLSS Sections
- Requested Parcels**
- BOULEVARD ASSOCIATES
- WEST GARDNER SOLAR
- WEST GARDNER SOLAR & BOULEVARD ASSOCIATES
- A
- AE
- AE - FW
- AO
- N/A
- NFHL Floodplains - FEMA**
- Zone and Subtype**
- X500
- XFUTURE
- XLevee
- Areas of 500 year floodplain
- 1% annual chance fld (future conditions)
- Area with reduced flood risk due to levee
- No base flood elevations determined
- Base flood elevations determined
- Floodway areas in zone AE
- Fld depths of 1 to 3 ft avg depths determined
- Area Not Included
- The flood data shown on this map is FEMA NFHL data.
- Disclaimer:**
- For more information contact your local floodplain administrator. <http://www.jocogov.org/dept/public-works/stormwater-management/program-overview>