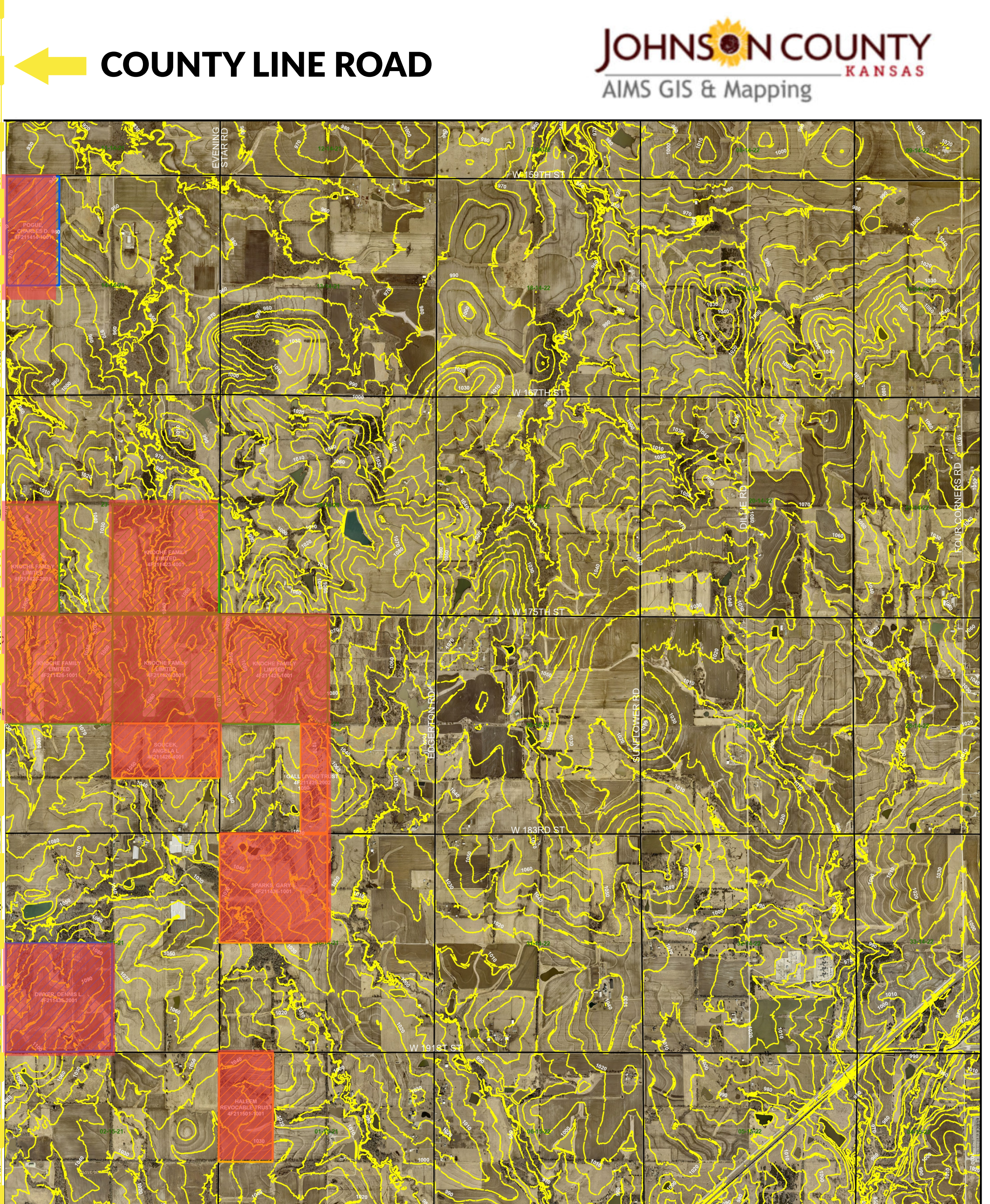
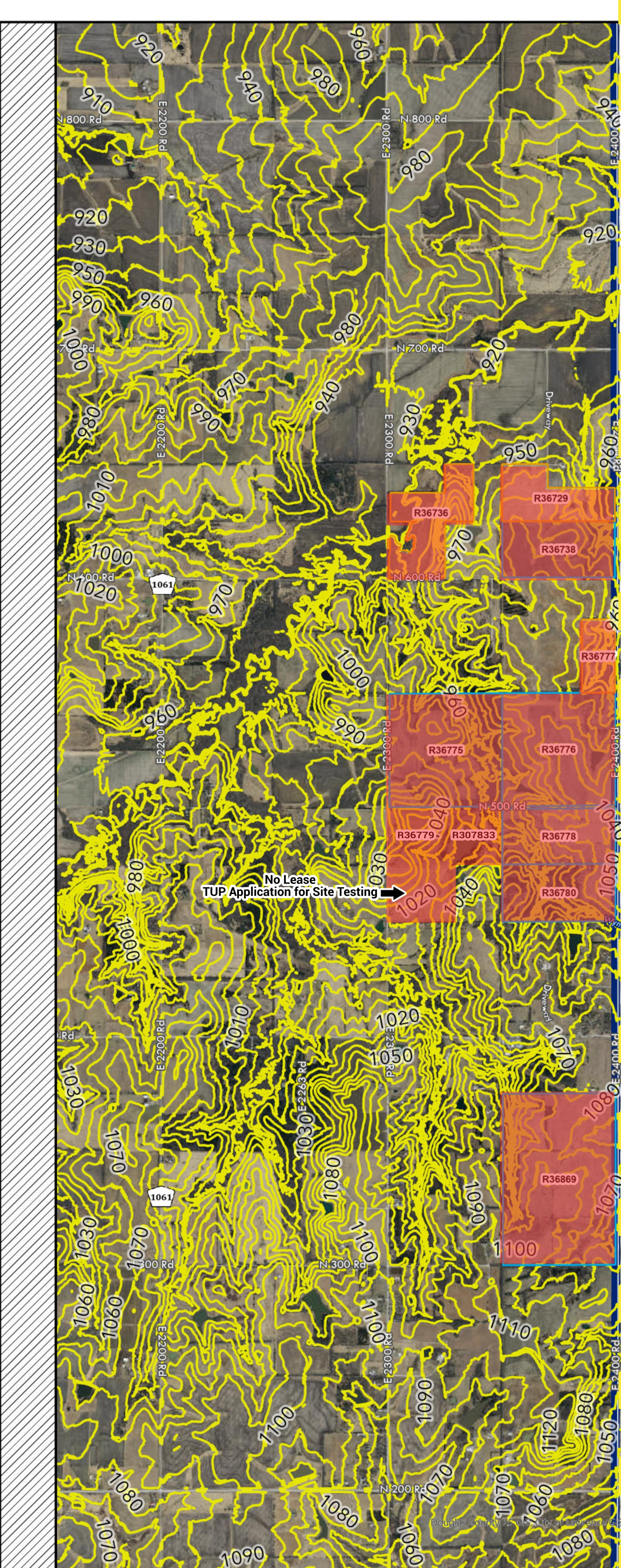
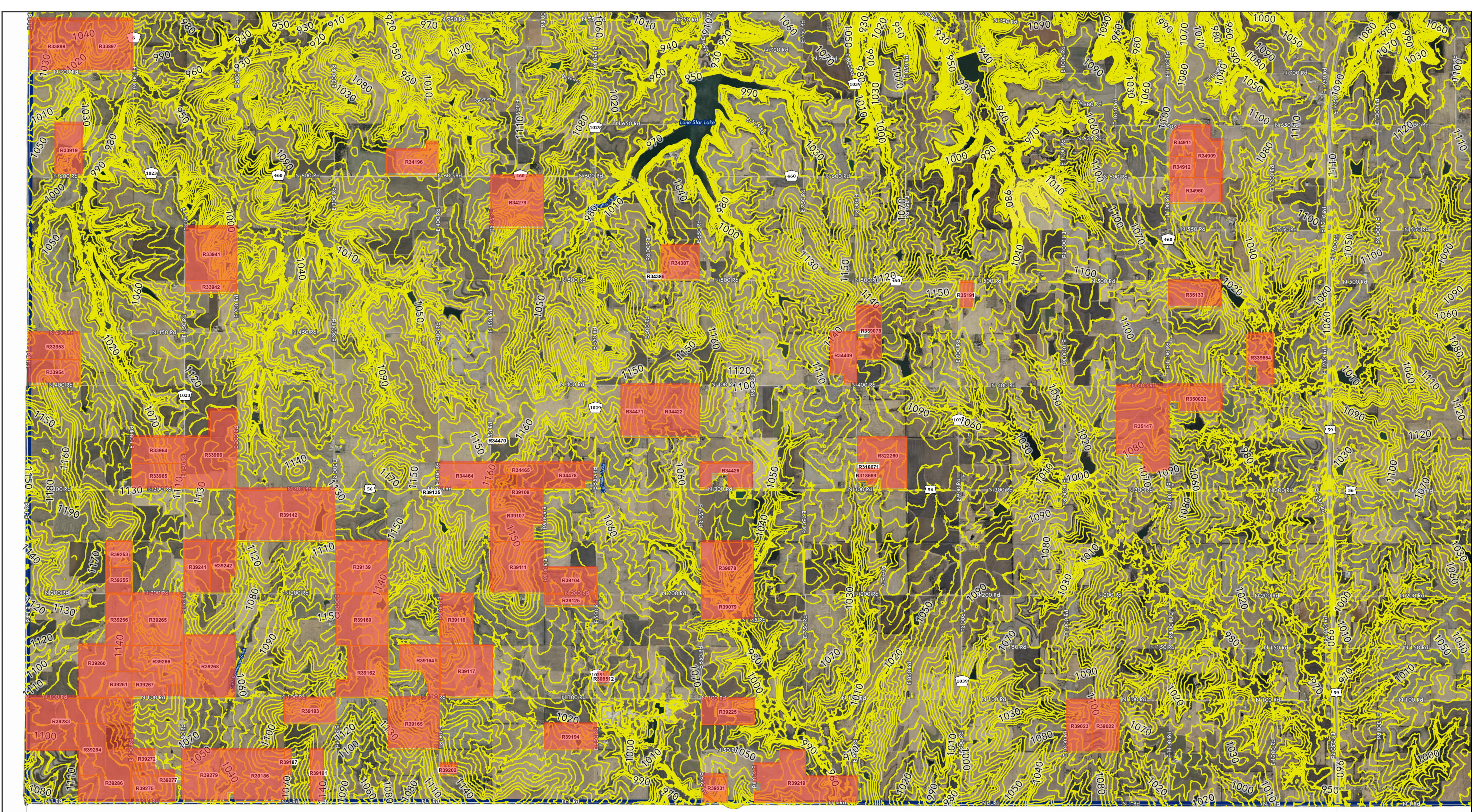


← **COUNTY LINE ROAD**



Map Frame:
West of Baldwin City, Kansas

SOUTH SECTION OF DOUGLAS COUNTY, KS: 10ft. Contours (Elevation/Slope)
TOTAL OF *Approximatley 8,463 Acres (13.22344 Square Miles)* **of Ground Leases Secured by NextEra Energy for Industrial Utility-Scale Solar/Wind Power Facilities**
 (Ground Leases/Deeds as of 4/3/2023, Sources: Douglas County, KS Deeds & GIS Mapping Departments)

Map Frame:
East of Baldwin City, Kansas

SOUTHWEST SECTION OF JOHNSON COUNTY, KS: 10ft. Contours (Elevation/Slope)
TOTAL OF *Approximatley 1,308.26 Acres (2.04415 Square Miles)* **of Ground Leases Secured by NextEra Energy for Industrial Utility-Scale Solar Power Facility**

- NextEra Energy (Boulevard Associates, LLC & West Gardner Solar, LLC) Ground Leases/Deeds for Industrial Utility-Scale Solar/WindFacilities (as of 4/3/2023)
- 10ft Contours



GIS MAP DISCLAIMER: This map is to be used for reference purposes only, and no other use or reliance on the same is authorized. Parcel lines are shown for tax purposes only and are not intended for conveyances, nor is it intended to substitute for a legal survey or property abstract. Parcels shown do not necessarily constitute a legal lot of record.
 Map produced 4/17/2023, GIS, SS, CM
 Date of Imagery: March 2022 by Surdex Corporation

- Index Contour (10 ft)
- PLS Sections
- Requested Parcels**
- Operator/Grantee**
- BOULEVARD ASSOCIATES
- WEST GARDNER SOLAR
- WEST GARDNER SOLAR & BOULEVARD ASSOCIATES