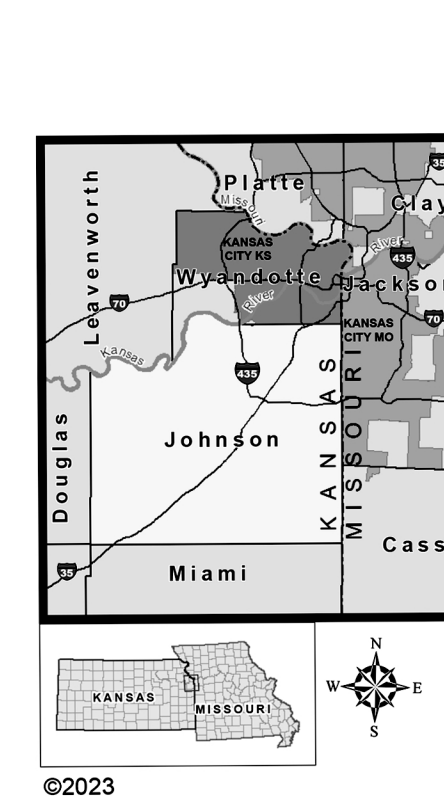
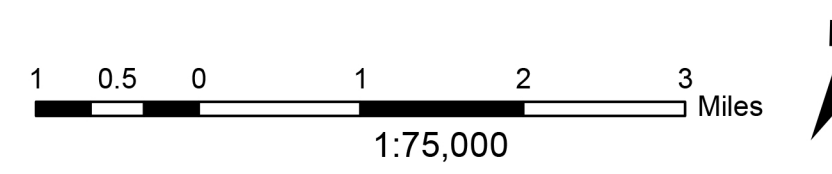


# Douglas County, Kansas Roadmap

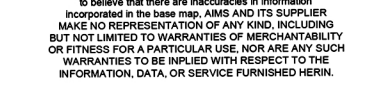
Map edited April 2017  
in all 474.5 square miles 303680 acres  
Keith A. Browning P.E. Director of Public Works/County Engineer  
produced by Douglas County GIS



## Johnson County, KS

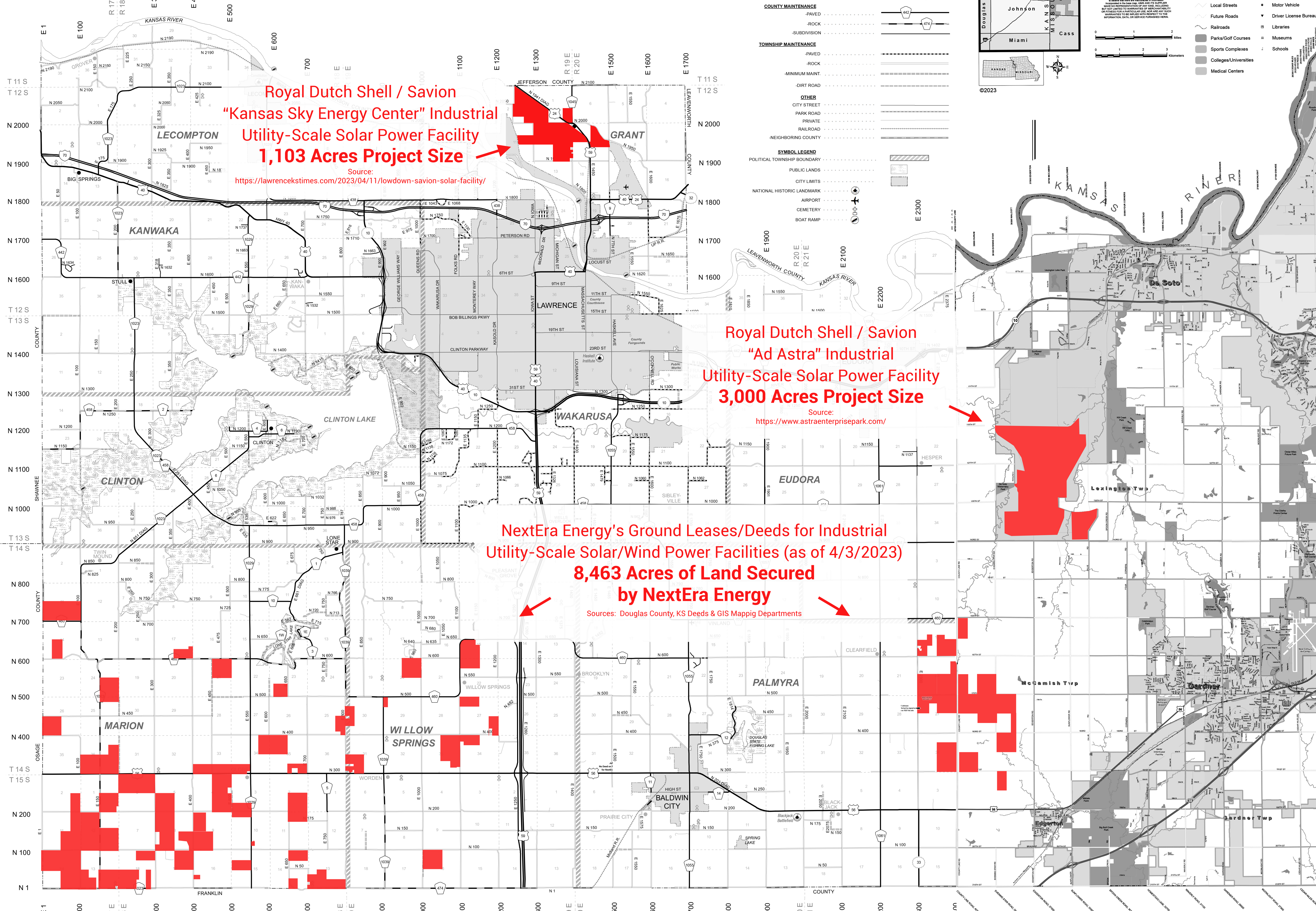
JOHNSON COUNTY  
AIMS GIS & Mapping

MAP/DATA DISCLAIMER  
This information is provided for informational purposes only. It is not intended to be used as a substitute for professional advice. The user assumes all responsibility for any use of this information. The information is provided "AS IS" without any warranty, express or implied, including but not limited to accuracy, completeness, or availability. The information is provided for informational purposes only and should not be used for any other purpose without the express written consent of AIMS GIS & Mapping.



©2023

- Highways
- Ramps
- Primary Roads
- Primary Unpaved
- Local Streets
- Future Roads
- Railroads
- Parks/Golf Courses
- Sports Complexes
- Colleges/Universities
- Medical Centers
- Hospitals
- Courthouse
- County Office
- City Hall
- Motor Vehicle
- Driver License Bureau
- Libraries
- Museums
- Schools



**Royal Dutch Shell / Savion  
"Kansas Sky Energy Center" Industrial  
Utility-Scale Solar Power Facility  
1,103 Acres Project Size**

Source:  
<https://lawrencekstimes.com/2023/04/11/lowdown-savion-solar-facility/>

**Royal Dutch Shell / Savion  
"Ad Astra" Industrial  
Utility-Scale Solar Power Facility  
3,000 Acres Project Size**

Source:  
<https://www.astraenterprise.com/>

**NextEra Energy's Ground Leases/Deeds for Industrial  
Utility-Scale Solar/Wind Power Facilities (as of 4/3/2023)  
8,463 Acres of Land Secured  
by NextEra Energy**

Sources: Douglas County, KS Deeds & GIS Mapping Departments