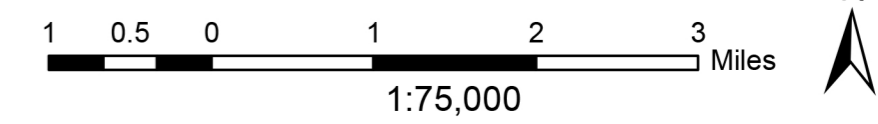


Douglas County, Kansas Roadmap

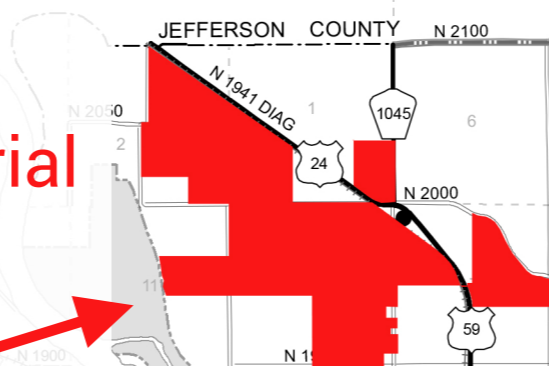
Map edited April 2017
in all 474.5 square miles 303680 acres
Keith A. Browning P.E. Director of Public Works/County Engineer
produced by Douglas County GIS



STATE MAINTENANCE	
KANSAS TURNPIKE/I-70	
FEDERAL HIGHWAYS	
STATE HIGHWAYS	
COUNTY MAINTENANCE	
-PAVED	
-ROCK	
-SUBDIVISION	
TOWNSHIP MAINTENANCE	
-PAVED	
-ROCK	
-MINIMUM MAINT.	
-DIRT ROAD	
OTHER	
CITY STREET	
PARK ROAD	
PRIVATE	
RAILROAD	
-NEIGHBORING COUNTY	
SYMBOL LEGEND	
POLITICAL TOWNSHIP BOUNDARY	
PUBLIC LANDS	
CITY LIMITS	
NATIONAL HISTORIC LANDMARK	
AIRPORT	
CEMETERY	
BOAT RAMP	

**Royal Dutch Shell / Savion
"Kansas Sky Energy Center" Industrial
Utility-Scale Solar Power Facility
1,103 Acres Project Size**

Source:
<https://lawrencekstimes.com/2023/04/11/lowdown-savion-solar-facility/>



**NextEra Energy's Ground Leases/Deeds for Industrial
Utility-Scale Solar/Wind Power Facilities (as of 4/3/2023)
8,463 Acres of Land Secured
by NextEra Energy**

Sources: Douglas County, KS Deeds & GIS Mappig Departments

